



IMPROVING FOOD TOGETHER

PKH Workshop, Brussels 12/03/2025



Co-funded by the
European Union



Focus – Capacity Building

The shared space(s) of the KICs

- Historical legacy to setup
- Shared structure
- Shared geography

Specific focus on Partnership Management and wider shareholder management

- Development
- Structure and staff
- Other shareholders in the ecosystem

OUR ACTIVITIES

EDUCATION

We equip the brightest minds all over Europe and beyond, with skills and knowledge to create a sustainable food system.

[READ MORE >](#)

INNOVATION

We drive open innovation to transform the food system by nurturing groundbreaking ideas, ensuring everyone can participate and benefit.

[READ MORE >](#)

ENTREPRENEURSHIP

We support innovative impactful entrepreneurs and startups to deliver new food innovations and businesses across Europe.

[READ MORE >](#)

PUBLIC INSIGHTS AND ENGAGEMENT

We design activities to engage people so that they can become agents of change in the food system.

[READ MORE >](#)

REGIONAL

We support the agrifood sector on the ground across Europe in our 3 regions: North & East, West, South.

[READ MORE >](#)

PUBLIC AFFAIRS

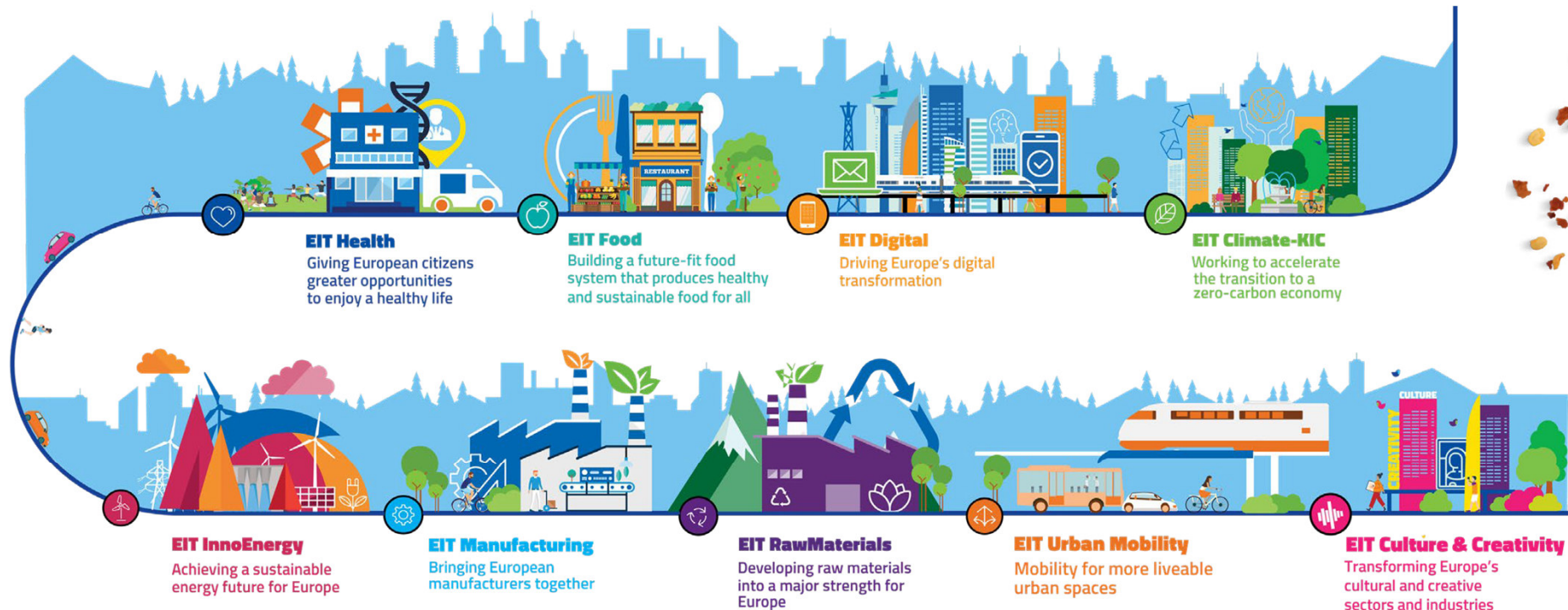
We build institutional relationships and lead relevant policy discussions to drive the agrifood innovation agenda in Europe.

[READ MORE >](#)

WE'RE PART OF EIT

EUROPE'S ONE-STOP SHOP FOR INNOVATION

The European Institute of Innovation and Technology (EIT) drives innovation by supporting entrepreneurs, innovators and students across Europe to turn their best ideas into reality. For each major societal challenge, there is an ecosystem of partners, the EIT's Innovation Communities, that creates and finds innovative solutions.



OUR REGIONS

With teams on the ground across Europe, we unlock innovation potential in businesses and higher education and create and scale agrifood startups to bring new technologies and products to market.

EIT Food is structured around 3 European regions with similar food system and market challenges, and managed by 6 regional offices.



NORTH & EAST

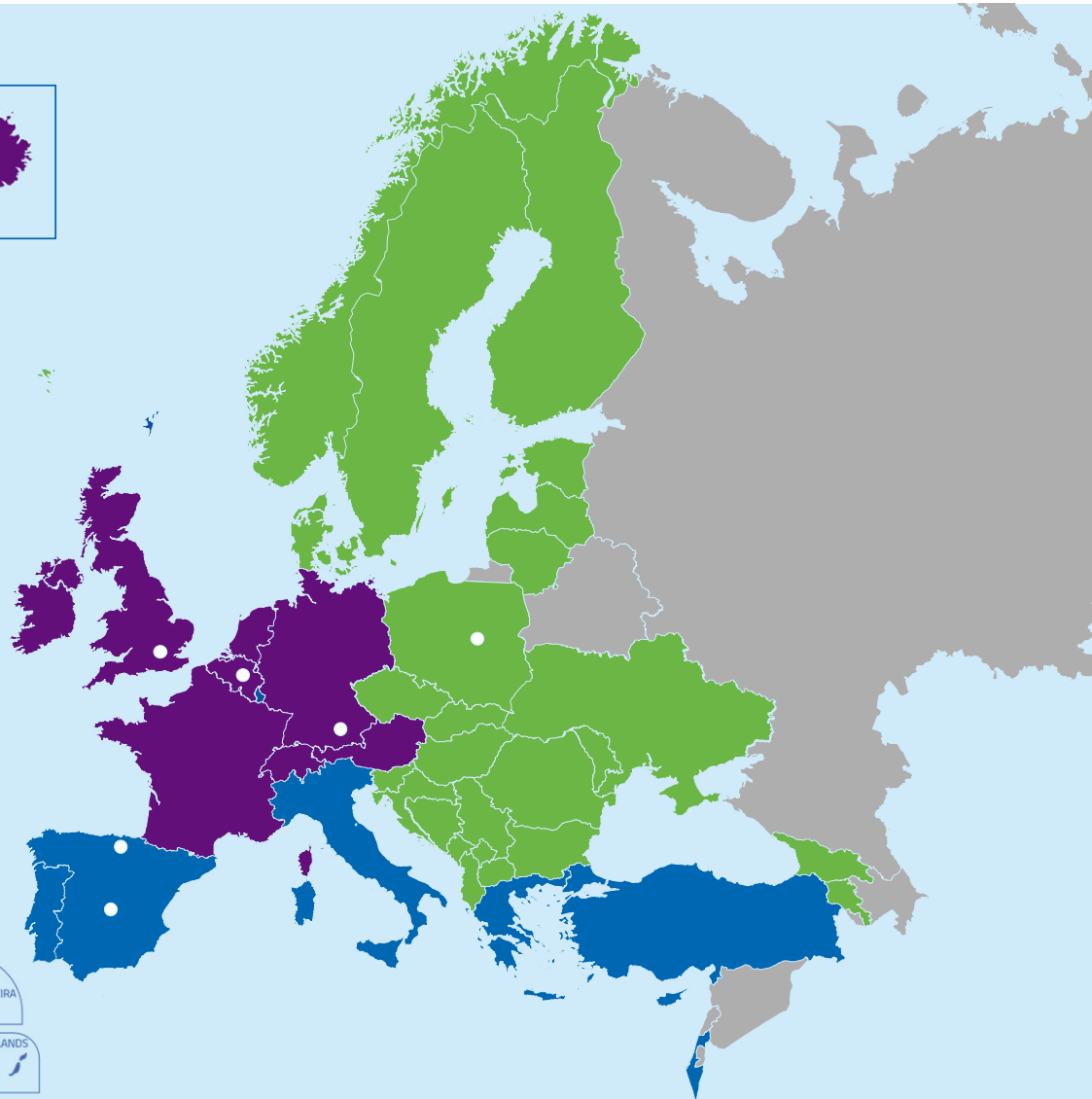
- Warsaw, Poland

WEST

- Reading, UK
- Leuven, Belgium
- Freising, Germany

SOUTH

- Bilbao, Spain
- Madrid, Spain



What do you need for this?

Dedicated teams for the daily business (+skills):

Central and hub teams need local and international knowledge of their specific area, speak at least 2 languages

- **Office management; Finance/Grants; HR; IT**
- **Legal** (+Belgian law; some legal is so complex it needs subcontracted law companies with worldwide network)

Dedicated teams for all other areas (+skills)

Focus areas: Impact, Public Engagement, Comms/branding; Partnership

- International dedicated knowledge + language skills, networking (skills)
- Strong intercultural communication, highly skilled in project, programme and people management
- Underpinning skills extremely important:
 - Problem solving/critical thinking/risk management
 - Leadership abilities
 - Flexibility and adaptation skills
- Thick skin

How do we not reinvent the wheel

Organizational collaborations

- Pioneering KICs supported incoming KICs
- Next KICs set ups: collaborations on C/D and practical level, along with EIT
- KIC CEOs, EDU Directors and others meet regularly (with and without the EIT)
- Dedicated shared physical space in Brussels (EIT House), and shared offices in many cities (London, BCN, etc)
- Dedicated cross-KIC spaces for cross-reaching collaborations and other initiatives are bundled under full EIT funding (e.g. Deep Tech Talent, Girls Go Circular, HEI, etc.)
- Majority of tools and processes used are the same, licenses are shared, branding is aligned, etc.

Staff and partners

- Specialized staff often moves through the KICs, either as full staff, or as subcontractors, as they are highly skilled for specific areas (e.g. Grants or Finance, but also Programme Management) and often switch between KICs when the re-structuring processes start taking place
- The environment of the KICs overlaps to some degree (content/partners/geography/events), which enables exchange
- There are dedicated working groups on cross-KIC level around collaborations, but also exchange of best practices – often initiated by the KICs themselves (e.g. a shared inter-legal group, a shared inter-grants group, etc.)

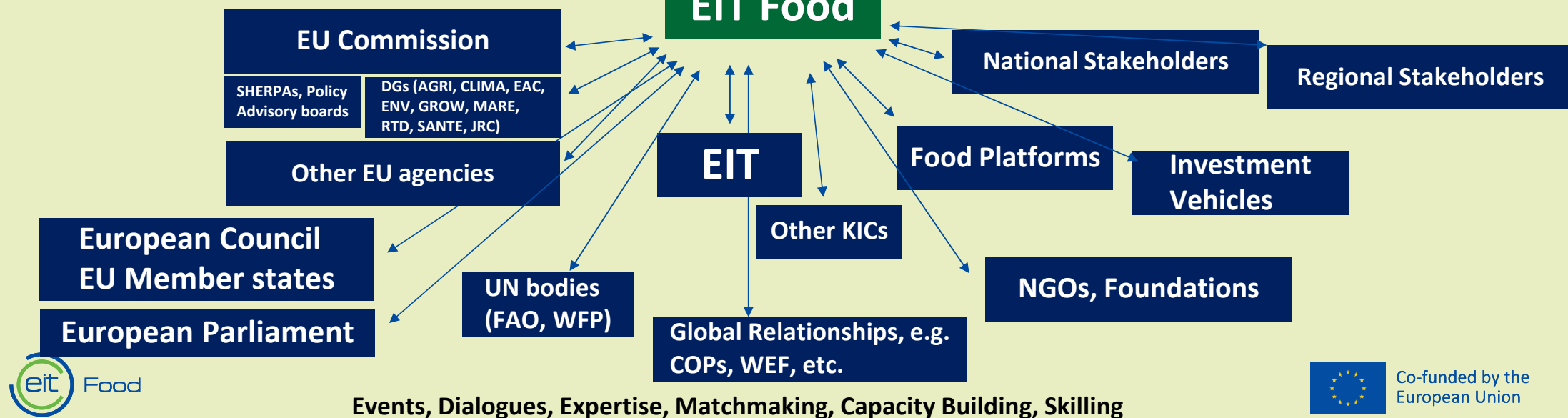
Focus – Capacity Building

The shared space(s) of the KICs

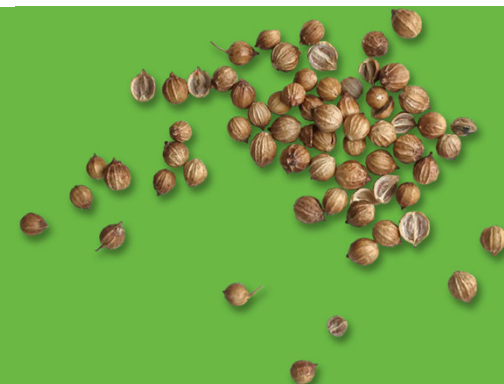
- Historical legacy to setup
- Shared structure
- Shared geography

Specific focus on Partnership Management and wider shareholder management

- Development
- Structure and staff
- Other shareholders in the ecosystem



LET'S CREATE THE FUTURE OF FOOD TOGETHER



BECOME PART OF OUR COMMUNITY

SHARE YOUR IDEAS

HELP US TRANSFORM THE FOOD SECTOR

FIND OUT MORE AT

www.eitfood.eu



Co-funded by the
European Union